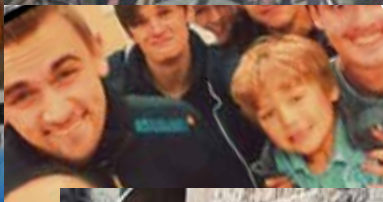




Welcome





# Welcome



Welcome to St Mary's, Beddington. We hope you will find the time you spend with us rewarding and inspiring.

St Mary's is an inclusive, friendly, family, worshipping community in the liberal Catholic tradition of the Church of England.

We meet and worship in a beautiful old building, known locally as 'the Church in the Park', but are always aware that a church is made of people, its 'living stones'.

In this booklet is more information about our activities and life together at St Mary's which we hope will be useful to you if you are new to our church. If you would like to know more about something in this booklet, please ask one of our congregation or ministers.

# All are welcome



At St Mary's we welcome people of all ages, backgrounds and experiences. We embrace the diversity of God's children and give thanks for all that we can learn about God from each other as we walk together on our journeys of faith.

We believe that God calls us to love not to judge. He meets each of us where we are in our lives and we hope to model His unconditional welcome in our worshipping community.

We are committed to opening our arms to all God's people regardless of age, gender, sexual orientation, marital or family status, ethnicity, race, colour, nationality, cultural origin, religion, disability, experience of mental distress, HIV status, caring responsibility, class, education, employment status, political belief or criminal conviction.

# Worship



## **Sunday**

### **8.00 am Eucharist**

A spoken, modern language service, usually with a sermon. The mood is quiet and reflective.

### **9.30 am Parish Eucharist**

Our busiest service. Sunday School takes place in the Centre. Hymns and some parts of the service are sung by the congregation and choir. Small children are welcome to stay in church with their parents and to use the quiet play area.

### **6.30 pm Choral Evensong**

This service is based on the Book of Common Prayer (1662). It is a quiet and contemplative service of readings, prayers and music. A sermon is usually preached.

# Worship



## **First Sunday of every month**

11.30 am Little Hearts.

A short service of play and praise for pre-school children and their families.

## **Wednesday**

10 am Eucharist

A spoken Communion service held in the Carew Chapel, followed by refreshments in the Centre.

7 pm Eucharist

A spoken Communion service held in the St Nicholas Chapel.

## **Weekdays**

9:30 am Morning Prayer

Morning Prayer is usually said in Church at 9:30 am Monday-Friday morning.

# Children



Children are welcome at all services at St Mary's.

**Sunday School** runs during our 9:30 Sunday Eucharist, and there is a play area with toys and activities at the back of the St Nicholas chapel if children wish to stay in the main service.

Children over 7 may be admitted to communion. **First communion services** are held periodically.

Other activities for children include:

**Little Hearts:** a service for preschool children at 11:30 on the first Sunday of the month.

**Messy Church:** twice a term on a Saturday, with craft activities, food and worship.

**Special services** at Christmas and Holy Week such as Christingle, Crib Service etc. and **Parade Services** with the local Guides, Brownies and Rainbows.

# SMYL



St Mary's Youth Link operates each Friday in term time in the church centre between 7 and 9pm for 15 to 19 year-olds (our senior youth group). We are planning an earlier session in the near future for 11-14 year olds.

Primarily it is a safe space for kids to meet and socialise with a range of activities and trips. In recent years this has included ice skating, Laser Quest, bowling and week-long activity centre trips - based at Carrotty Wood in Kent.

SMYL is open to all youngsters in the parish.

Youth leaders are fully DBS checked in accordance with church policy.



# Discipleship



At St Mary's we value every opportunity to learn more about God and to grow as disciples of Jesus.

**Mondays at St Mary's** meets every Monday evening for Bible study and fellowship.

**Home @ St Mary's** house groups meet monthly to explore our faith.

There are **courses** for learning more about our faith in **Advent, Lent** and other times of the year. **Confirmation** preparation is available for any adult not yet confirmed. Our parish organises retreats and quiet days for contemplation.

Financial generosity is an important part of our discipleship and we run a **Stewardship** scheme to enable our worshippers to contribute to God's work in Beddington.

# Fellowship



There are many opportunities to get to know each other in a social setting at St Mary's. Throughout the year there are one-off events such as our Passover meal, Frost Fair and Black History Month Celebrations, as well as a variety of music concerts.

Both a **Men's Group** and a **Ladies' Group** meet regularly for a variety of social activities.

There is an active **Mothers' Union** branch at St Mary's and a group of **Flower Arrangers** who care for the seasonal decoration of the church.

A **Poetry** group meets monthly.

As well as augmenting our worship St Mary's **Bellringers** enjoy a lively programme of social activities.

# Choirs



For many years St Mary's has enjoyed a long musical tradition that has enhanced church services and given inspiration to all who have worshipped here. St Mary's reflects the broad Anglican choral repertoire within a traditional liturgy and maintains a choir of about 10 boys, lady altos and men. The choir sings at the Parish Eucharist and Choral Evensong. At every service we sing an anthem or motet.

The regular choir get time off when St Mary's Ladies Choir lead the Sunday worship and perform an anthem once a month.

During school holidays a 'scratch' choir operates, which is open to all.

Recruits to all the choirs are welcome.

# Life events



As your local Church of England parish we are here to help you mark the major events of your life in God's presence. We offer a beautiful setting for marriage, baptism (christening) and other services.

## **Baptism**

Baptism is the beginning of our journey to and with God. It is a wonderful opportunity to celebrate God's love for us and our place as God's children. Baptism services are public services: they take place either during the main parish service at 9.30 am, or on the third Sunday of the month at a separate service at 11.30 am. Please speak to our SPA Maud for more details.

## **Weddings**

St Mary's is a popular church for weddings, and is particularly busy during the summer months. Please speak to our SPA Heather for more details.

# Community



## **Drop in**

Our Community Drop-in runs each Friday from 10:30 am. Do join us for tea or coffee and a chat.

## **Church Centre**

St Mary's Centre is used both for church events and by other community organisations. The Parish Centre is attached to the church.

## **Magazine & Newsletter**

St Mary's publishes a bi-monthly magazine in print and online and a weekly email newsletter (send a 'subscribe' email to [news@stmarysbeddington.org.uk](mailto:news@stmarysbeddington.org.uk)).

## **Visits**

We are happy to arrange visits to our building from Community, Historical and Heritage societies etc.

# Who's who



**Rector:** Andrew Fenby 020 8647 1973

**Reader:** Jenifer Davison 020 8773 2004

**SPAs** (Southwark Pastoral Auxiliaries):

Maud Adams 07903 122 119

Heather Cosgrove 020 8647 9102

**Churchwardens:**

Vanessa Meiris 020 8641 4374

Christine Morgan 020 8669 3933

**Director of Music:** Karl Dorman 07870 938167

**Sacristan/Servers** Linda Wood 07928 545 960

**Ladies Choir:** Pam Akhurst 020 8643 7948

**SMYL:** Alison Hargreaves: 07910 814447

**Bellringers:** Jean Kimber 020 8660 4250

**Safeguarding:** Kate Giles 07956 675506

**Stewardship Recorders**-Pierre and Jean Delahunty 020 8669 1603



Find us online at...



[www.stmarysbeddington.org.uk](http://www.stmarysbeddington.org.uk)